

City Council Work Session
June 21, 2022



City Owned Properties

- **City-Owned Properties within City Limits**
- **City-Owned Properties located in the County**
- **Jointly-Owned Properties within City Limits**
- **Jointly-Owned Properties located in the County**

Does not Include:

TYPE	Number
Streets	160 miles; 2.75M square yards
Alleys (currently 6 city-maintained)	0.43 miles; 16,500 square yards
Paper Streets & Paper Alleys	
City of Charlottesville School Board Properties	7 properties

City-Owned Properties Fun Facts:

Total # City-Owned Parcels: **170**
(includes within the City and Albemarle County)

Total # Jointly-Owned (City & County) Parcels: **18**
(includes within the City and Albemarle County)

Total approximate Acreage within City: **789 ac**

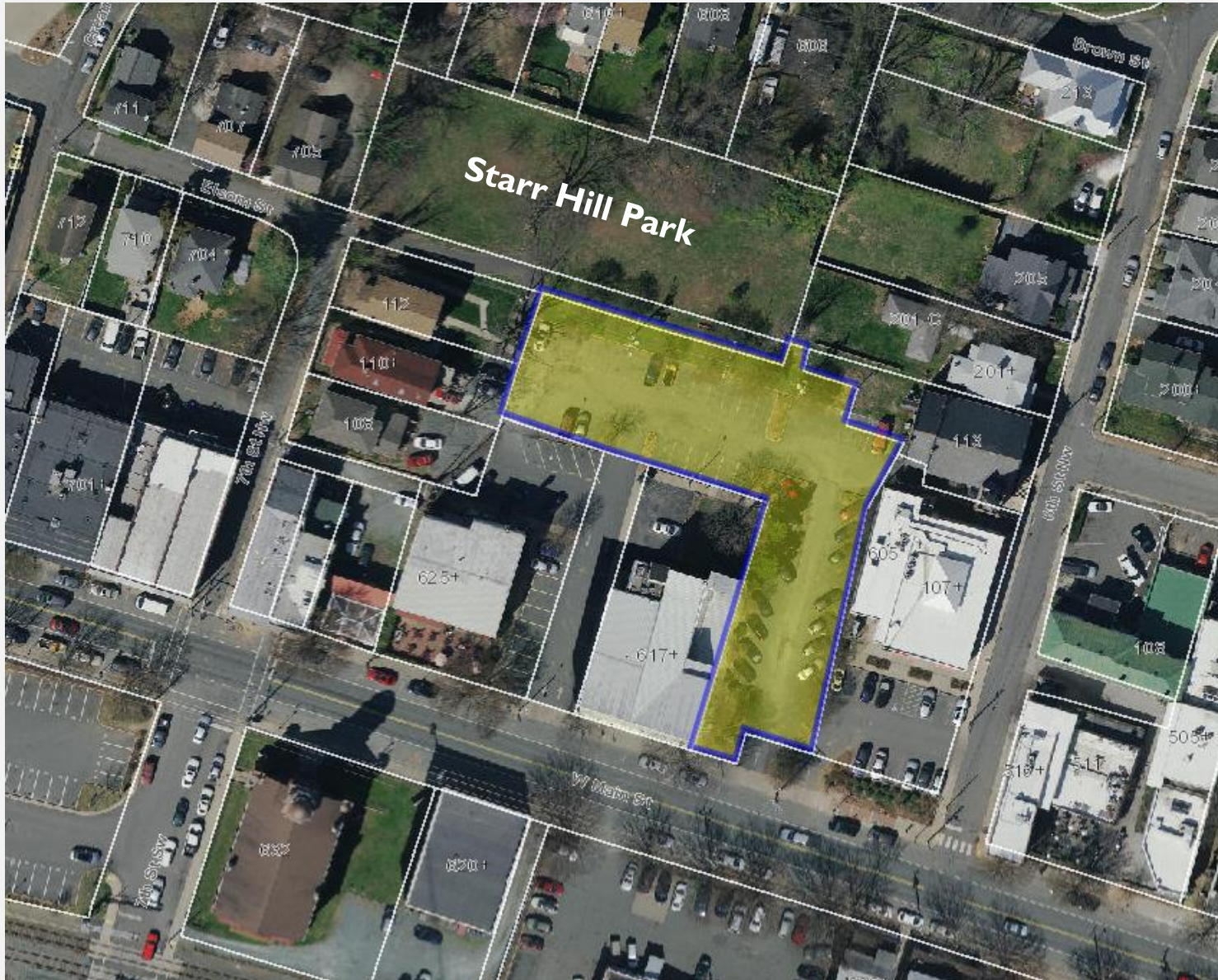
Total approximate Acreage in County: **2,827 ac**

SUMMARY

Type of Property	Number of Parcels
City-Owned Properties Within City Limits	131
City-Owned Properties Located in the County	39
Jointly-Owned Properties Within City Limits	10
Jointly-Owned Properties Located in the County	8

City-Owned Properties within City Limits	Number of Parcels
City Facilities	10
City Owned Buildings/Properties Used by Others	12
Schools	4
Parks / Trails / Cemeteries / Open Space	60
Parking Garages / Public Parking Lots (does <u>not</u> include condominium/pk. spaces in WSPG)	10
Parking Lots used by Others (court services, etc.)	3
Vacant Lots / Rights-of-Way / Utilities	32
(parcels > 1/2 acre)	2
(parcels 1/4 - 1/2 acre)	6

EXAMPLES OF CITY OWNED PROPERTIES LOCATED IN THE CITY



**0 W Main Street
Parking Lot
0.51 acres**

**Starr Hill Park
0.48 acres**

EXAMPLES OF CITY OWNED PROPERTIES LOCATED IN THE CITY



0 W Main Street

EXAMPLES OF CITY OWNED PROPERTIES LOCATED IN THE CITY



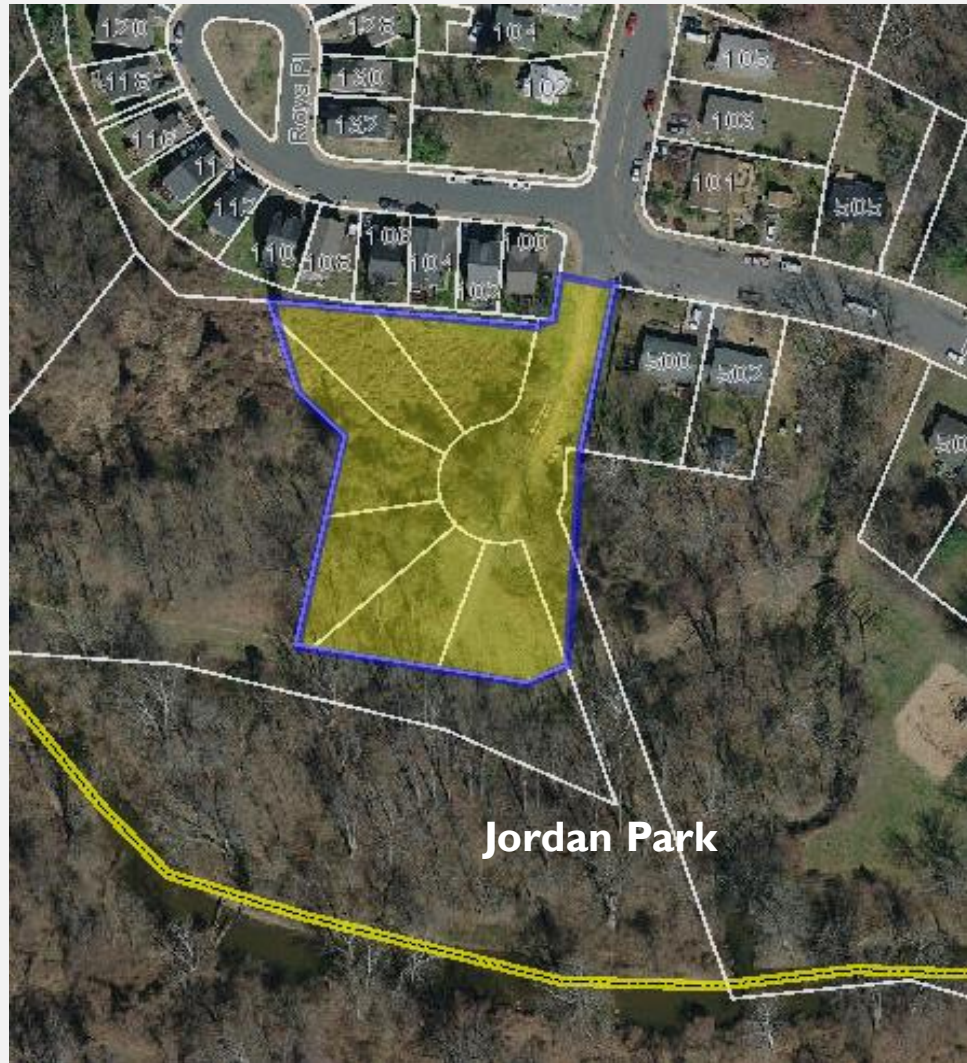
842 – 844 Estes Street - 0.22 acres

EXAMPLES OF CITY OWNED PROPERTIES LOCATED IN THE CITY



1601 Long Street - 0.07 acres

EXAMPLES OF CITY OWNED PROPERTIES LOCATED IN THE CITY

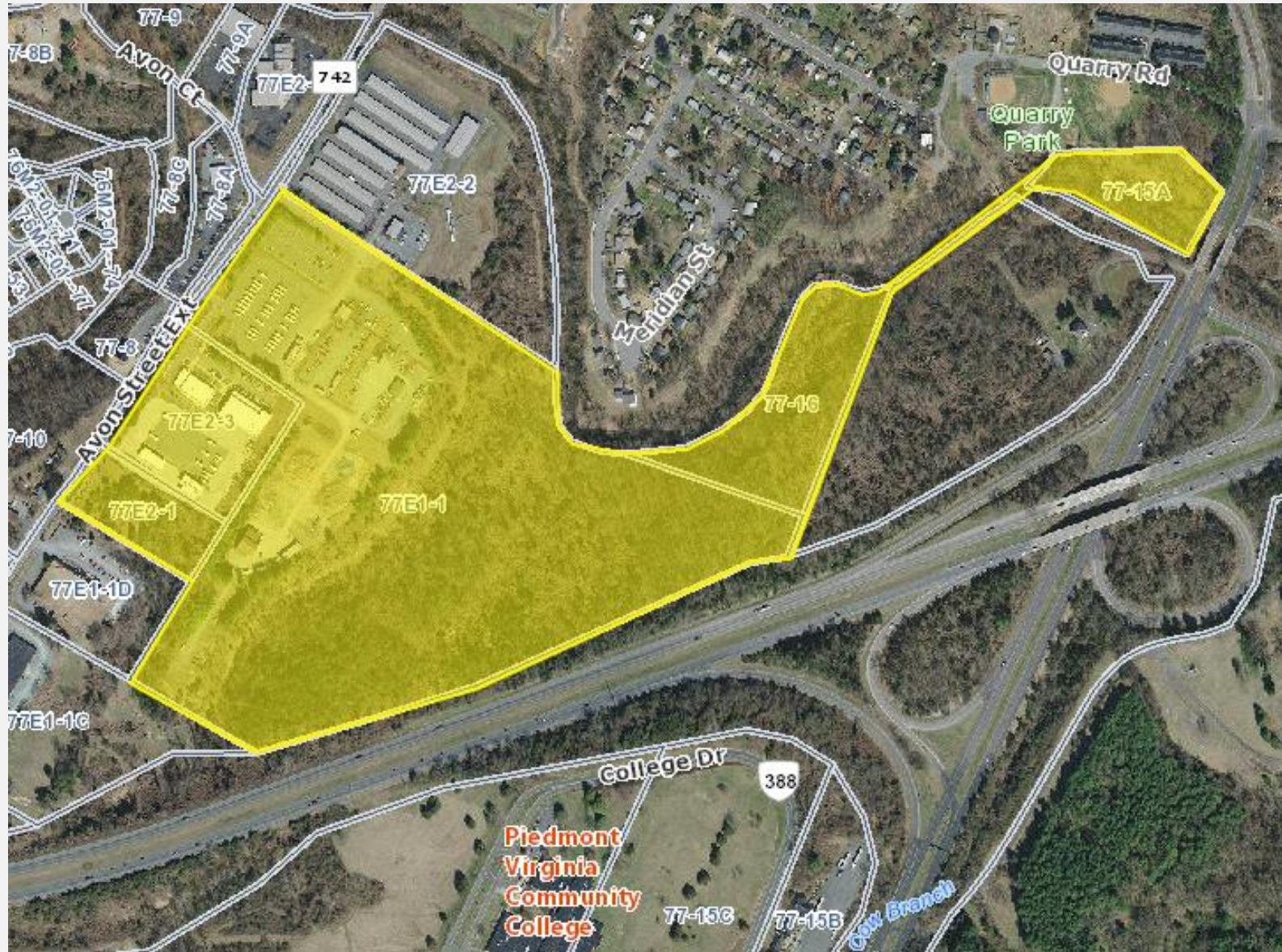


Charley Close lots - +/- 1.16 acres



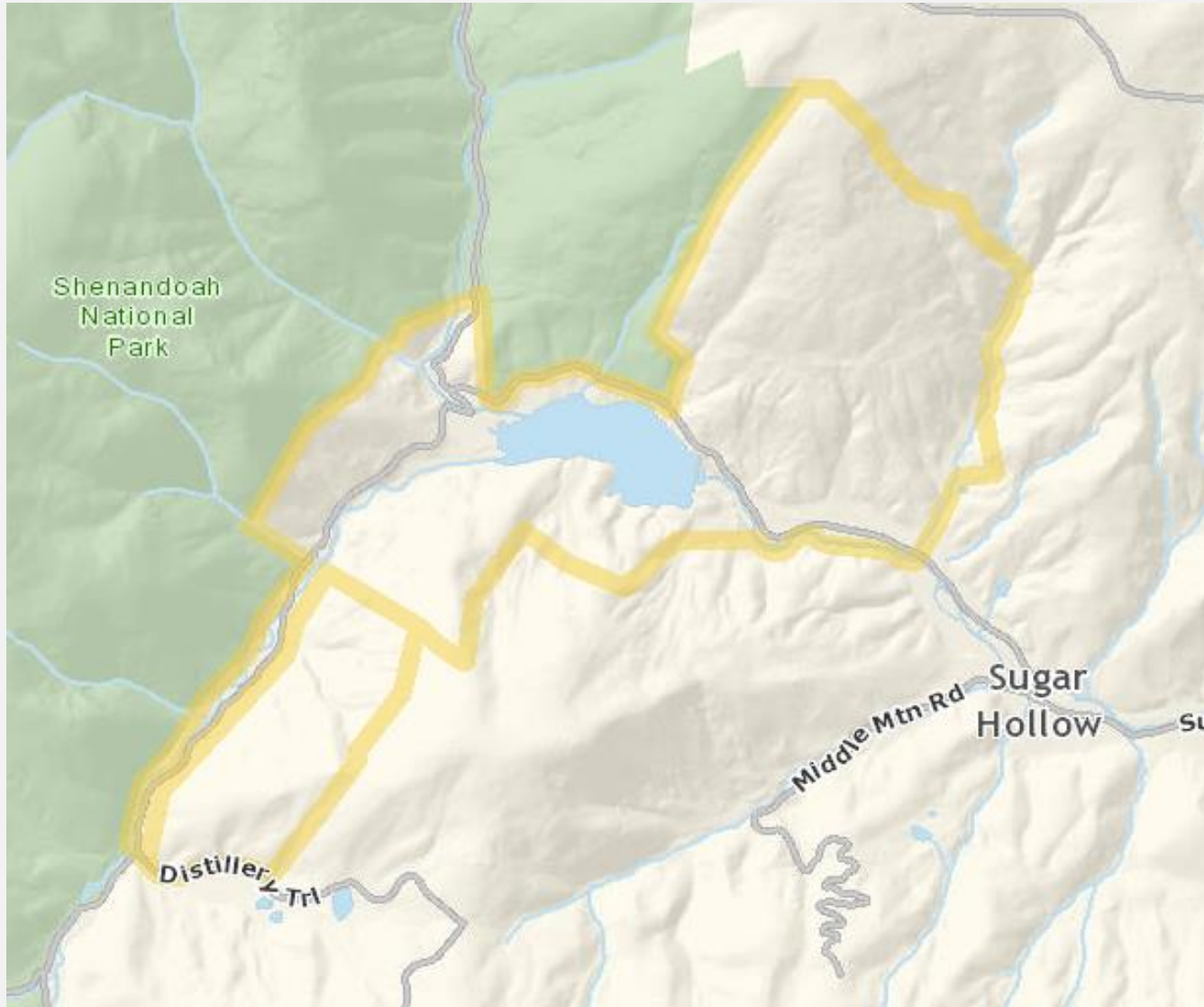
City-Owned Properties Located in Albemarle County	Number of Parcels
City Facilities	2
City-Owned Buildings/Properties Used by Others	1
Schools	1
Parks / Trails / Open Space	33
Vacant / Right-of-Way	2

EXAMPLES OF CITY OWNED PROPERTIES LOCATED IN THE COUNTY



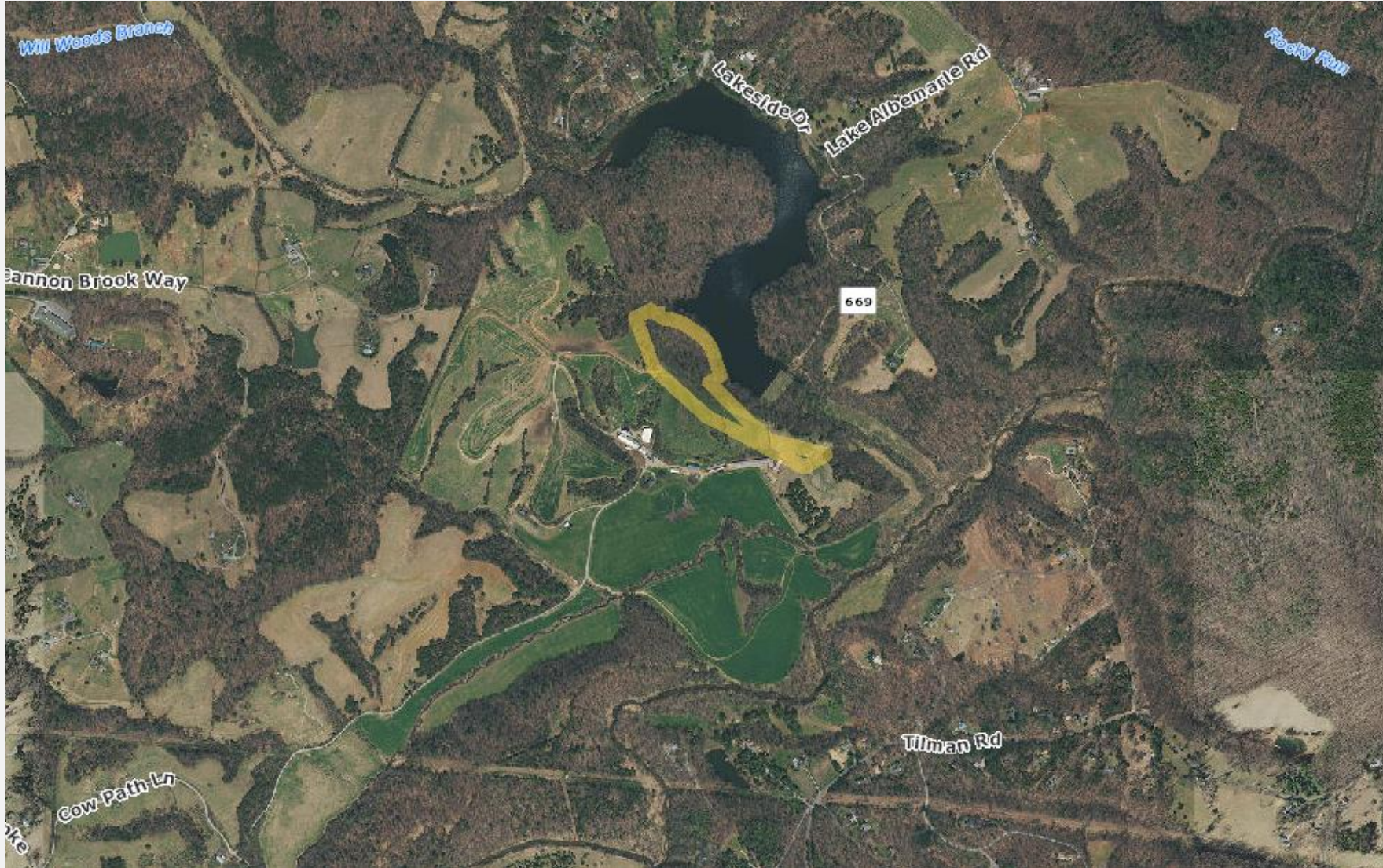
1505 – 1545
Avon Street Ext
67.56 acres

EXAMPLES OF CITY OWNED PROPERTIES LOCATED IN THE COUNTY



**Sugar Hollow
Reservoir
1,023.6 acres**

EXAMPLES OF CITY OWNED PROPERTIES LOCATED IN THE COUNTY



**Albemarle Lake
Subdivision
10 acres**

Jointly-Owned Properties within City Limits	Number of Parcels
City & County Owned Properties	
Buildings / Properties Used by Others	9
Parking Lots (used by Others)	1

Jointly-Owned Properties Located in Albemarle County		Number of Parcels
City & County Owned Properties		
Parks / Trails / Open Space		8

Current Challenges:

- **Need a consistent process/policies & procedures to acquire or dispose of properties.**
- **Who is responsible for maintaining these properties?**
- **Are any of these properties developable?**

Staff Recommendations:

ITEM	RECOMMENDATION
Need a consistent process/policies & procedures to acquire or dispose of properties	A standard process will be developed to address acquisition and disposition of various types of properties appropriately.
Need to identify responsible department (or entity) for maintaining properties	A departmental staff Point of Contact will be identified for those properties that require maintenance.
	In some cases, a tenant/lessee may be identified to maintain the property.
Are any of these properties developable?	City staff will identify properties that may be developable, for future discussions.

Next Steps:

- **Implement Recommendations**