

ADA Transition Plan





Precision Infrastructure Management

- Precision Infrastructure Management is an industry leader in municipal asset management, with a specialty in right-of-way infrastructure, facilities, and parks.
- PIM works with local leaders - elected, professional, and stakeholders from the greater community - to develop the scope of services for a conditional study. PIM will use our team's combined decades of experience to help you identify key project attributes along with a timeline, budget, and implementation plan.
- Once completed, your community will have the situational awareness needed to satisfy federal, state, and local requirements and develop budget-saving asset management implementation plans. PIM will continue to be an active partner during this stage and use our expertise in asset management to ensure you are getting the most out of your investment from our services.



Project Management



Charlie Szold, Managing Partner
Senior Project Manager
c.szold@precisioninfrastructuremgmt.com



Aaron Hester, MBA, SVP
Quality Compliance Manager
a.hester@precisioninfrastructuremgmt.com



ADA Transition Planning

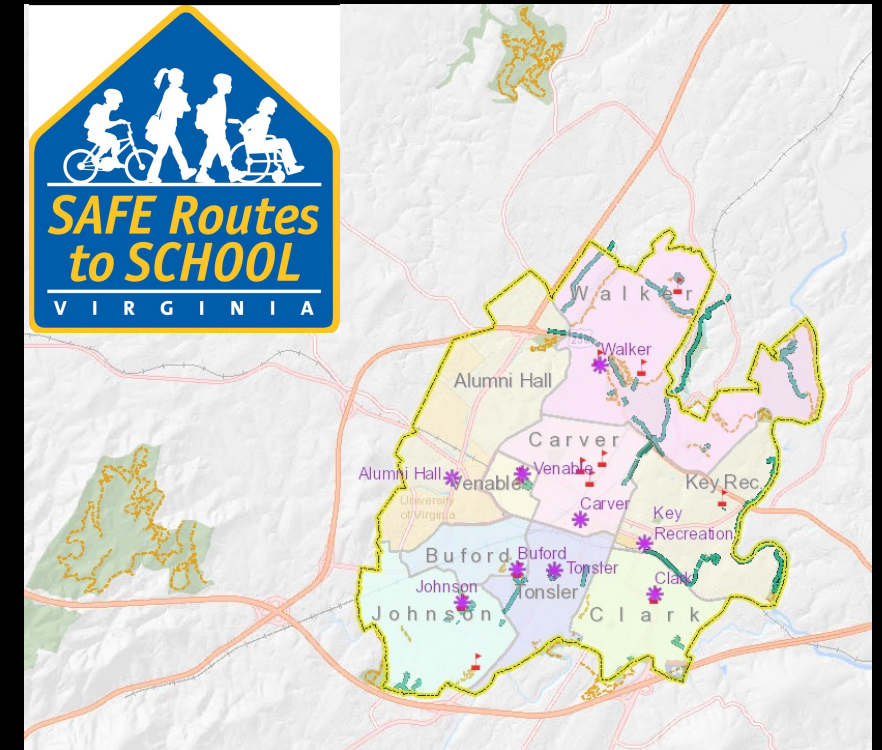
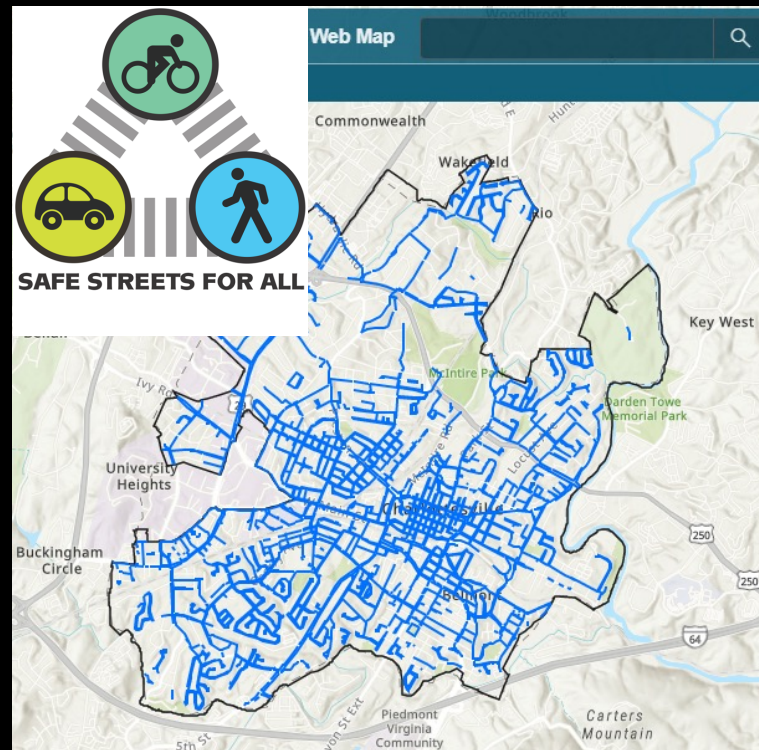
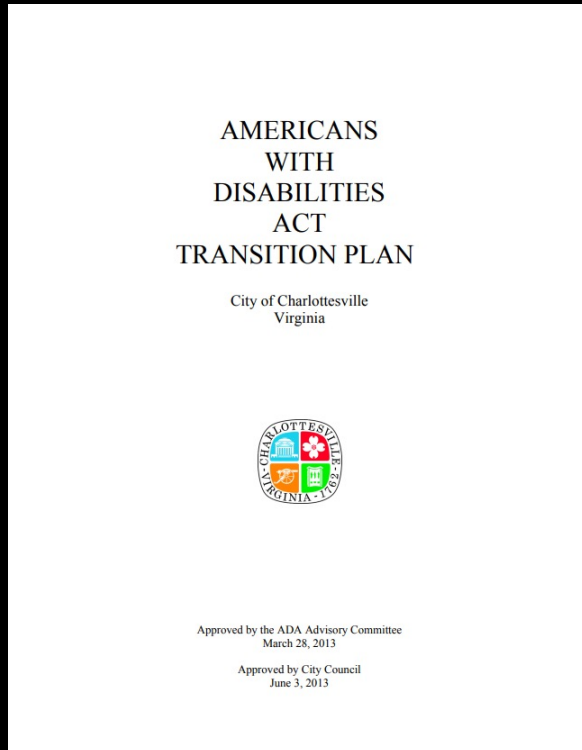
- Title II of the Americans with Disabilities Act (ADA) of 1990 prohibits discrimination against people with disabilities in state and local government (public) services.
- Where structural modifications are required to achieve program accessibility, a public entity with 50 or more employees must do a transition plan by **July 26, 1992**, that provides for the removal of these barriers. Charlottesville, VA's plan is from 2013 and requires updating.
- Transition Plan Requirements
 - Public input
 - Assessment of Public ROWs, Facilities, Parks, Services and Programs for accessibility barriers
 - Remediation planning
 - Implementation planning
 - Identify staff responsible
 - Grievance Procedure/Review of procedure

ADA Transition Plan Update

2013 ADA Plan

ROW – 170 Miles

Facilities / Parks - 156



Public ROW

- Public Right-of-Way Accessibility Guidelines used
- Curb ramps, trip hazards, pedestrian signals, inadequate sidewalk width



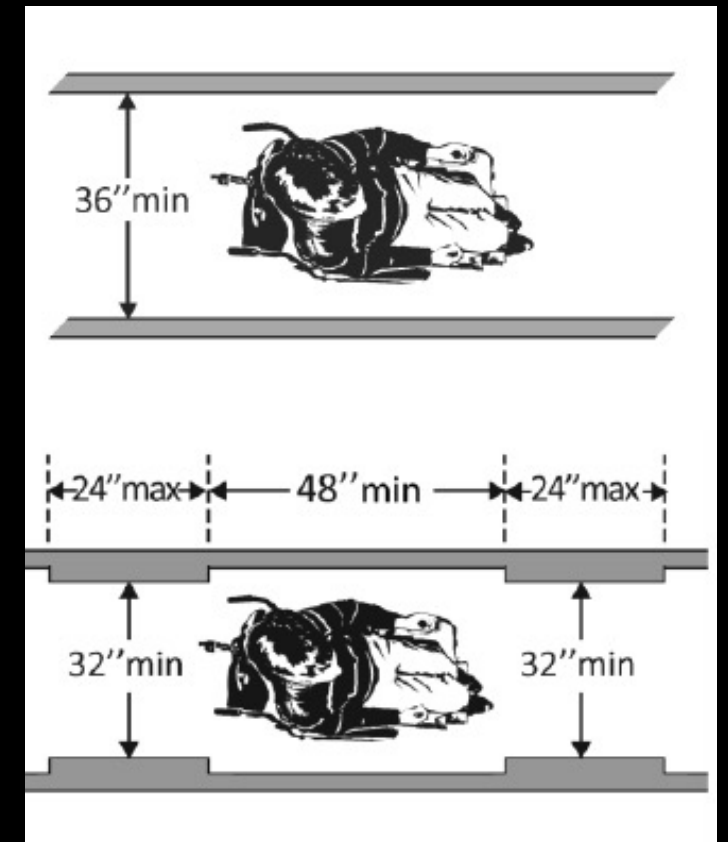
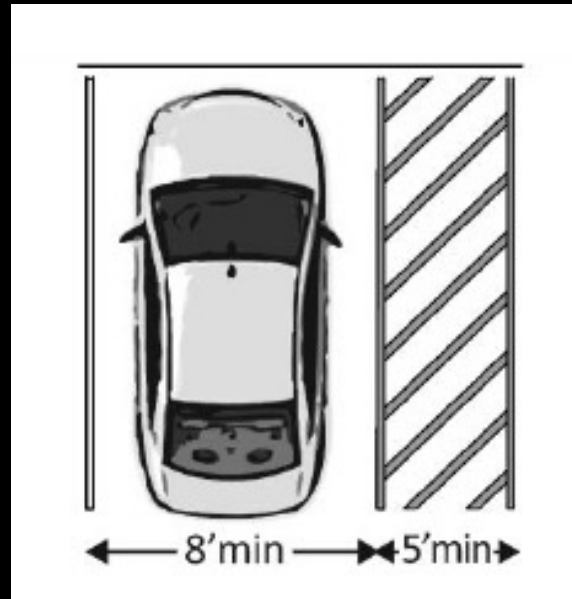
Public ROW

- Curb ramps, trip hazards, pedestrian signals, inadequate sidewalk width



Facilities/Parks

- ADA Accessibility Guidelines (ADAAG)
- Priority 1 – Approach and Entrance
- Priority 2 – Access to Goods and Services
- Priority 3 – Toilet Rooms
- Priority 4 – Additional Access



Programs/Services

- Dr. Jana Burke, Ph.D
 - Identification of relevant City services, programs, and activities for review
 - Compilation of relevant material
 - Semi-structured telephone interviews with Department heads
 - Review of available information on City websites/social media
 - Review of City communication methods, including provisions for auxiliary aids
 - Review of public input
 - Website reviewed for accessibility
 - Results of the review compiled along with remediation recommendations



- Implementation Plan Includes Utilization of Alternative Maintenance Activities
- Support Green Initiatives
- Proven Environmental Savings



Green Initiatives

CITY GREEN
City of Charlottesville

... an online interactive map of projects and resources around Charlottesville that contribute to making us A Green City!

www.charlottesville.org/citygreenmap



Green Stormwater Infrastructure

Greenleaf Park Rain Garden

Green stormwater infrastructure utilizes plants, trees, and other measures to mimic natural processes that control and treat stormwater before it enters creeks, streams, and rivers.

Green stormwater infrastructure includes practices such as vegetated roofs, bioretention, tree planting, permeable pavement, and rainwater harvesting that aim to intercept, evaporate, transpire, filter, infiltrate, capture, and reuse.

Sustainable Buildings & Energy

LEGEND

On Public Property

- Rain Garden / Bioretention
- Rainwater Harvesting
- Green Roof
- Infiltration
- Permeable Pavement
- Retention Pond
- Stormwater Wetland
- Tree Box Filter
- Stream Daylighting
- Stream Restoration

On Private Property

- Rain Garden / Bioretention
- Permeable

On Public Property

Type	Facility	Owner	Address	Description	Date Completed	Link
Rain Garden / Bioretention	Charlottesville High School (CHS) Stadium Bioretention	Public (City)	1464 Melbourne Road	A bioretention facility was installed when the CHS football stadium bleachers were replaced.	2013	

CLICK FOR MORE INFO

- Engagement Tactic #1 – Fact Finding and Situational Awareness
- Tactic #2 – Schedule of Meetings and Material Development
- Tactic #3 – Active Outreach

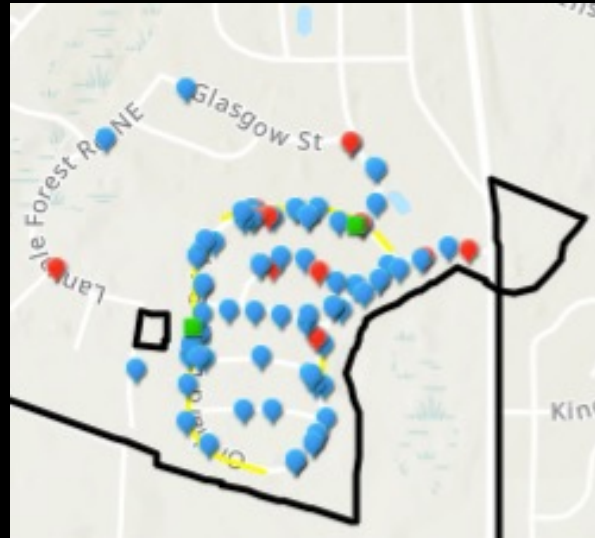
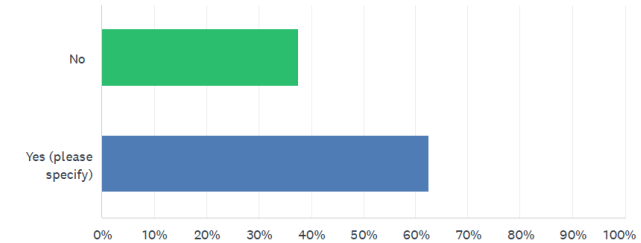


- Tactic #4 –
Synthesis and
Understanding
- Tactic #5 –
Incorporating
Feedback

Engagement

Q3 Do you participate in programs, services, or activities offered by the City of Lenoir?

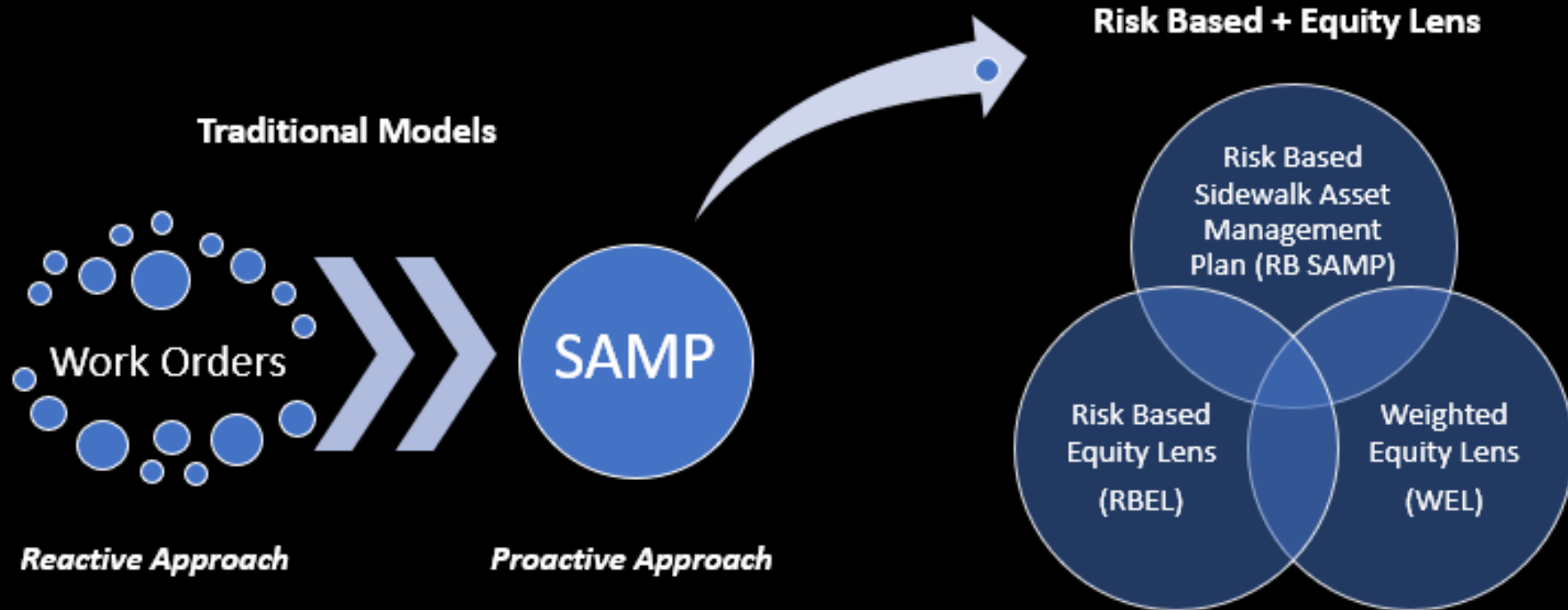
Answered: 8 Skipped: 1



Beyond the ADA Transition Plan

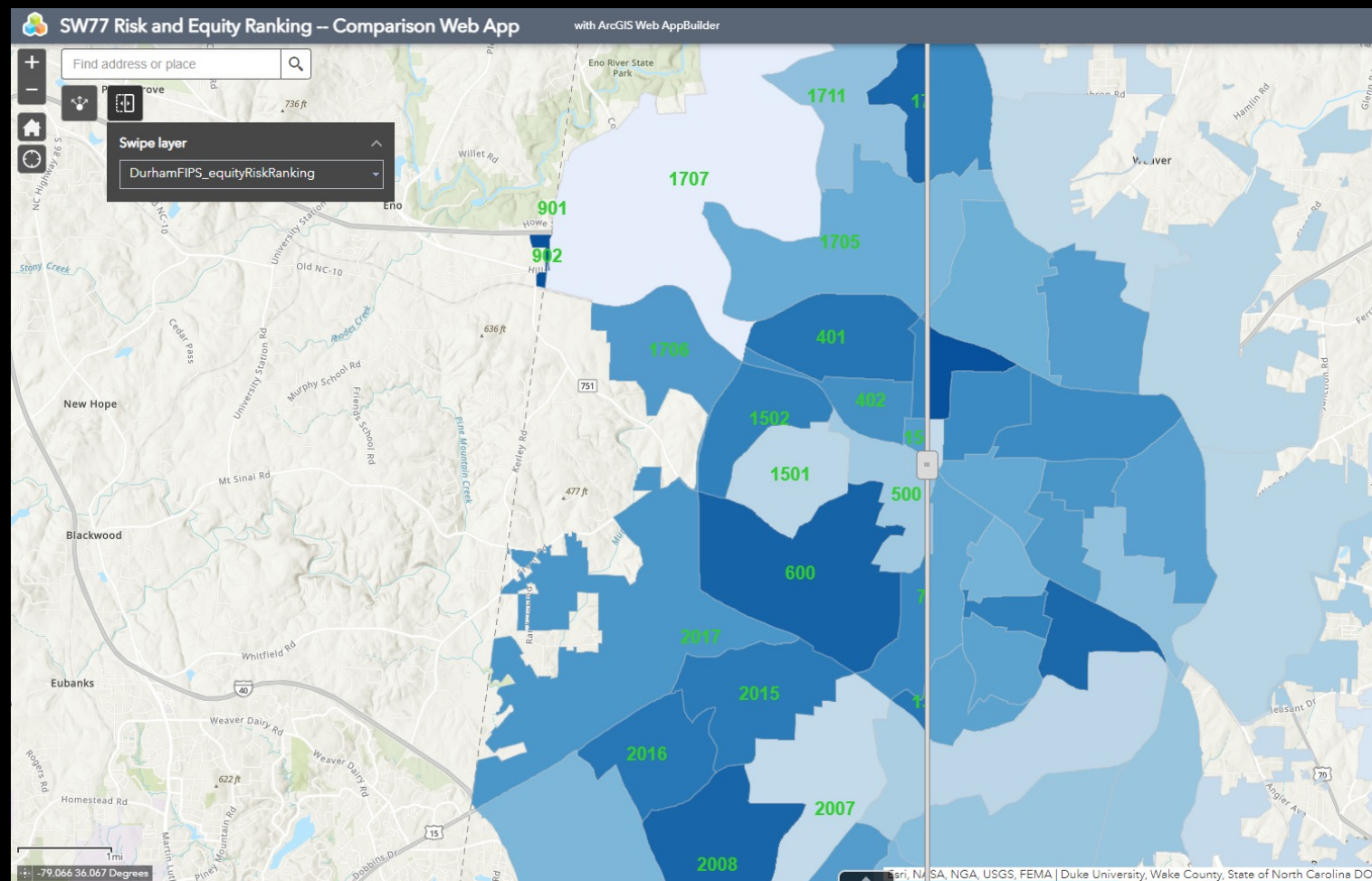
- Risk-Based Approach
- Equitable Implementation Planning
- Total Cost of ADA TP and Implementation
- Alternative Maintenance Activities

Risk-Based Approach

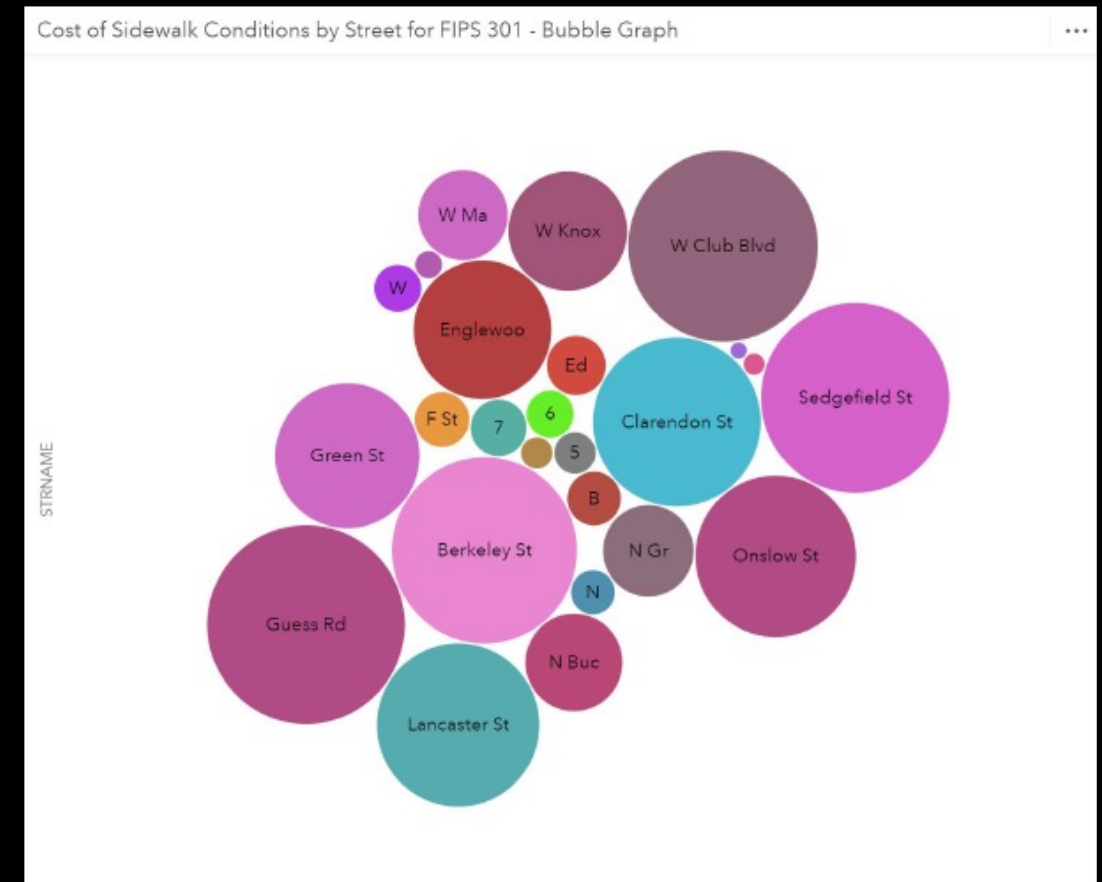
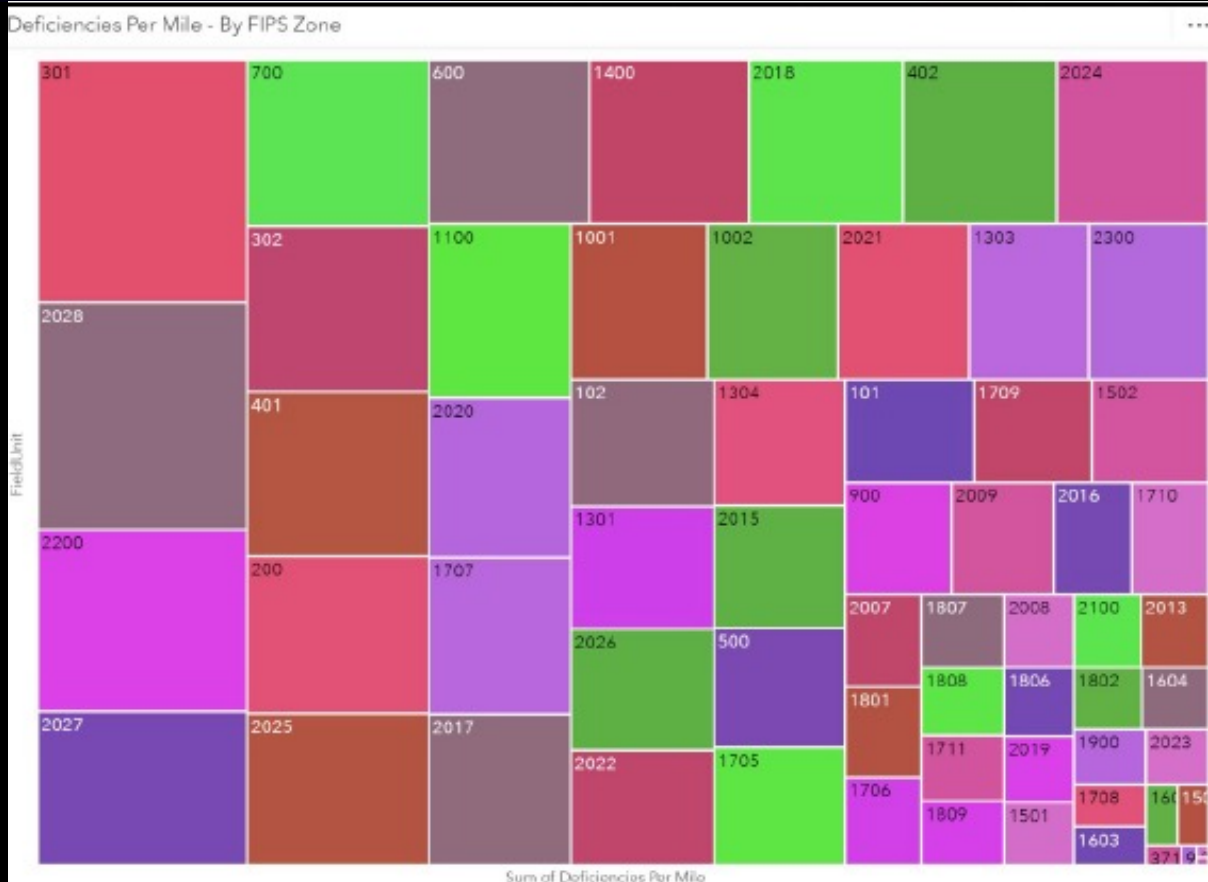


Risk-Based Prioritization

- Data Driven Model
- Prioritizes Highest Risk Areas
- Equitable Implementation
- Updated with Changes Over Time

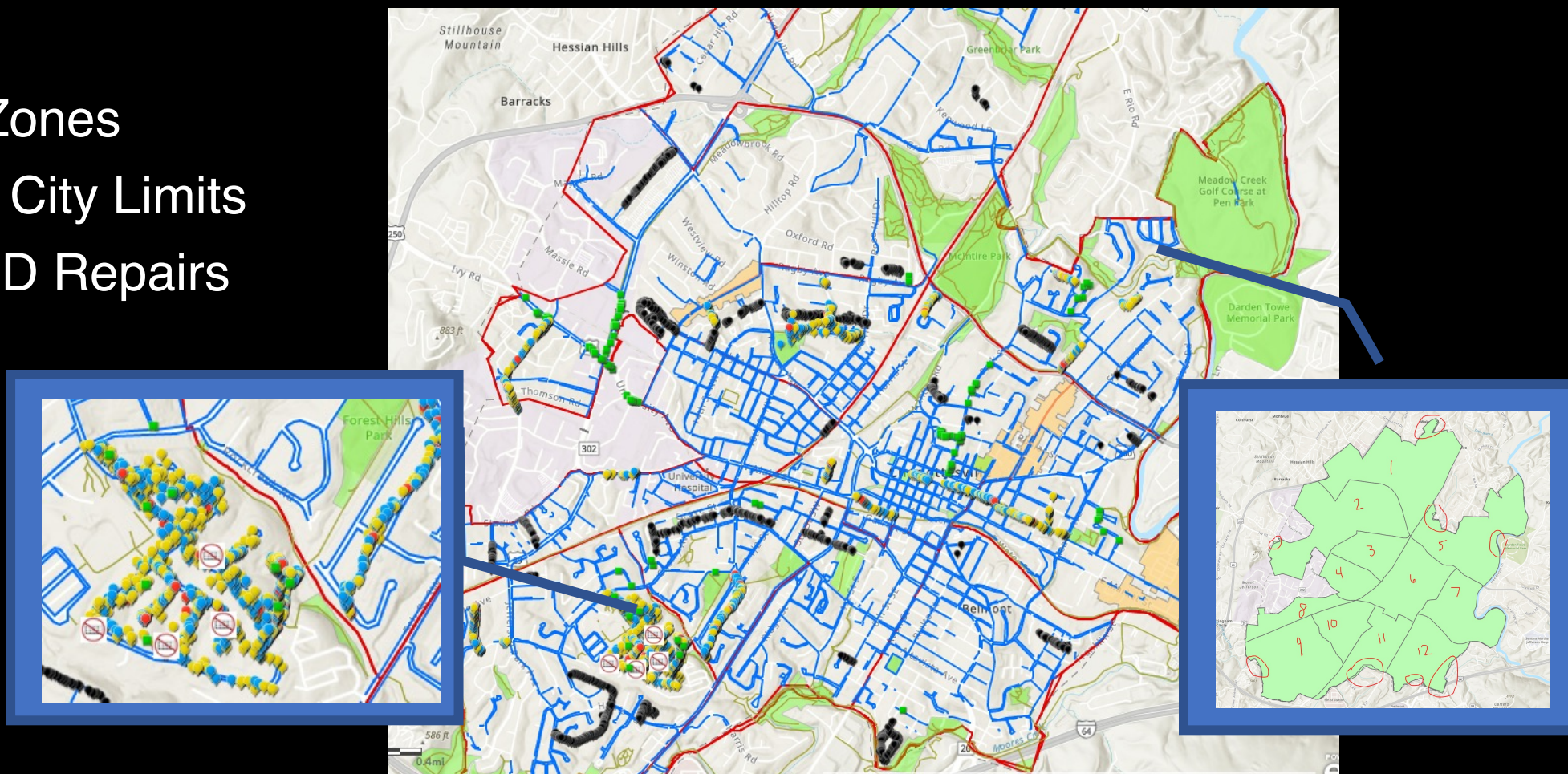


Prioritization By Zone / Street



Prioritization & Implementation Analysis

- 23 FIPs Zones
- 12 Inside City Limits
- 4,015 VHD Repairs

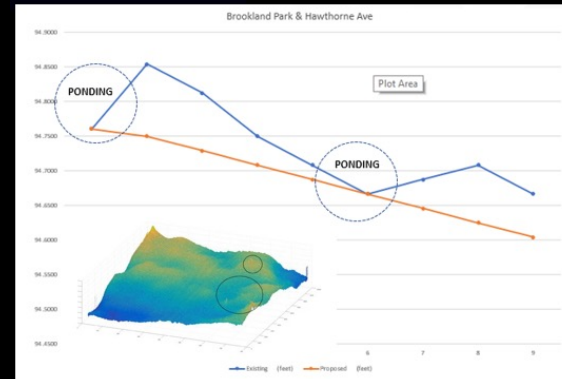


Alternative Maintenance Activities

Precision Concrete Cutting



Ponding Mitigation Technology



Precision Pilot Locations



Topography Alterations



Successful Flow Test

- Field Collection – Starting as soon as this week
- Public Outreach – Start in July and continue until project conclusion (and beyond)
- Facilities/Parks assessment starts after completion of ROW assessment
- Programs/Services/Website ongoing
- Report delivery goal – End of 2023



Thank You

Q & A