An aerial photograph of a large reservoir, likely the Ragged Mountain Dam. The water is dark blue and calm, surrounded by dense green forest. A long, low dam structure spans the width of the reservoir. In the foreground, there's a grassy area with a small, irregularly shaped pond or inlet. A paved road or path runs along the right side of the reservoir. The overall scene is lush and green, suggesting a natural or park-like setting.

# Proposal to Amend the Ragged Mountain Dam Project Agreement

Presented to the Charlottesville City Council

By Lauren Hildebrand, Director of Utilities - City of Charlottesville and

Bill Mawyer, Executive Director - Rivanna Water and Sewer Authority

December 4, 2023





# History



- Historical drought in Central Virginia in 2002 sparked a decade long water supply planning process and completion of the community's water supply plan.
- The water supply plan was implemented through the "Ragged Mountain Dam Project Agreement" in 2012 by the City, ACSA, and RWSA. The Agreement required additional infrastructure to increase the community's drinking water supply, and cost sharing allocations for RWSA to construct and operate those facilities including:
  - ✓ *A new earthen dam for the Ragged Mtn Reservoir (ACSA 85%, City 15%)*
  - ✓ *A new pipeline to RMR from the South Rivanna Reservoir (ACSA 80%, City 20%)*
  - ✓ *Future modifications to the RMR to raise the water level an additional 12 feet ten years before the community's water demand equaled 85% of the available water capacity (ACSA 80%, City 20%)*



# Ragged Mountain Dam

- Historical dams built in 1885 & 1908
- “new” dam built from 2012-2014
- 785 ft long, 125 ft tall, pool level of 671 feet, impounds 1.4 billion gallons
- Constructed to impound an additional 12 feet of water = 700 million gallons with pool level of 683 feet
- Existing trails are above the 683 pool level



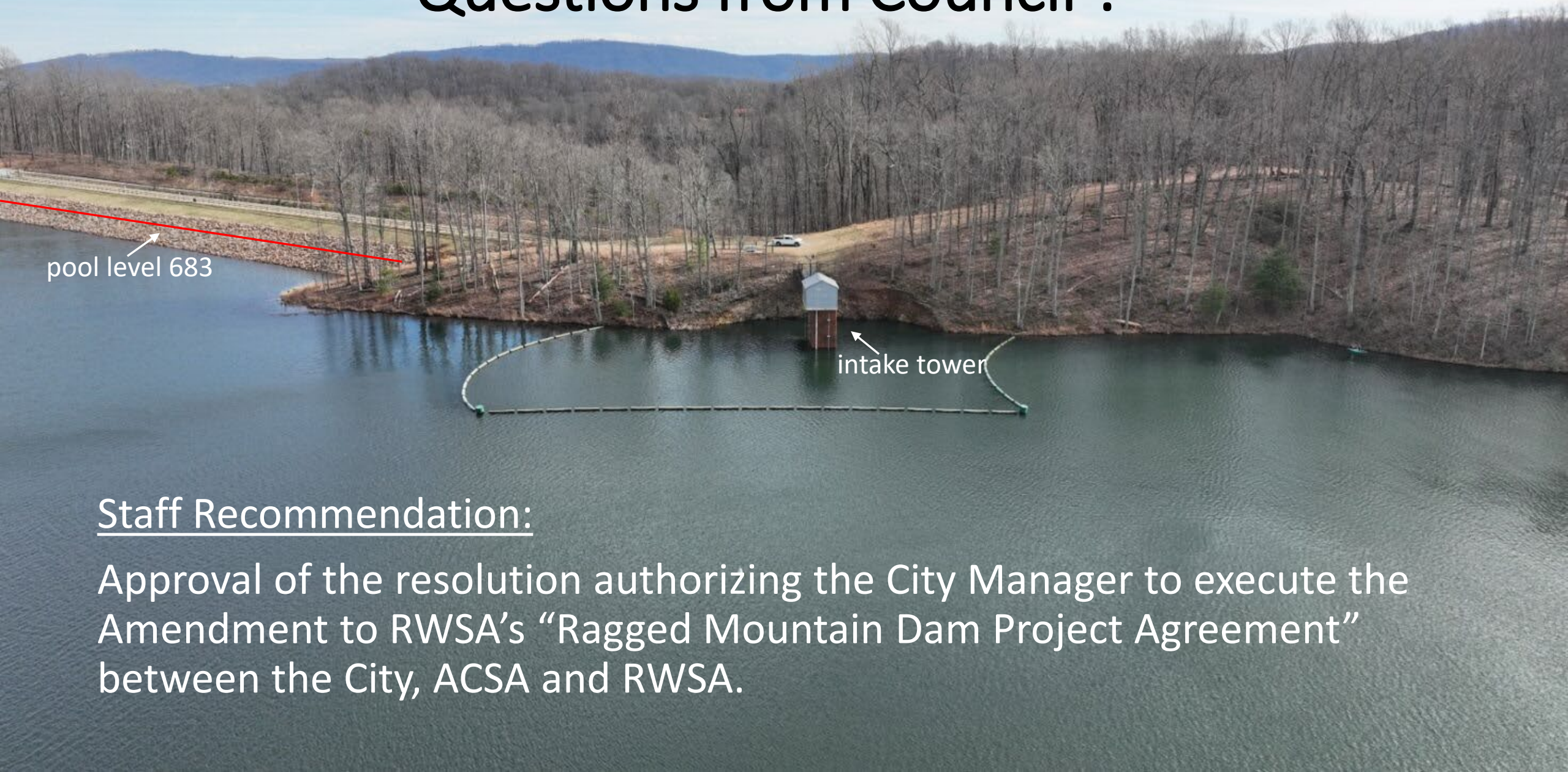


# Proposed Amendment to the Agreement

- Remove the requirements in the Agreement that stipulate the additional pool level of the Ragged Mountain Reservoir can be constructed only when the capacity threshold is met.
- Request RWSA to raise the pool level in the Ragged Mountain Reservoir from 671 feet to 683 feet to provide an additional 700 million gallons of water storage.
- Allow RWSA to increase the pool level using the existing pipeline from Sugar Hollow Reservoir when:
  - ✓ water inflow to the Sugar Hollow Reservoir is at or greater than 30 million gallons per day, or
  - ✓ the water level in the Ragged Mountain Reservoir falls below the initial pool level of 671 feet, or
  - ✓ required by the Virginia Department of Environmental Quality or other emergencies.



# Questions from Council ?



## Staff Recommendation:

Approval of the resolution authorizing the City Manager to execute the Amendment to RWSA's "Ragged Mountain Dam Project Agreement" between the City, ACSA and RWSA.