

2024 Parks & Recreation Pollocks Branch Trail Bridge Accessibility Enhancements

A CDBG-funded Accessibility Enhancements Proposal

Office of Community Solutions
October 2024



Staff Contact:

Anthony Warn

warna@charlottesville.gov



Pollocks Branch Trail Bridge Proposal

Creekside view of existing 'rock hop' used to transit the creek. Visible at the top of the hill is one of the redeveloped buildings at CRHA's South First Street development.

A new pathway will connect the bridge to South First Street as well as to an existing gathering space within the trees that will also be enhanced as part of this project.



Pollocks Branch Pedestrian Bridge

PLACE Design Taskforce
July 18, 2019



Pollocks Branch Pedestrian Bridge

- Began as project to re-use an existing VDOT bridge in the County – will now be a new bridge
- One of the Key Elements of the SIA Plan is “connectivity” (Strategic Investment Area)
- Community neighbors provide input into planning and design
- Combine pedestrian, bicycle and trail improvements with neighborhood need
- Combine Walkable Watershed concept plan with new Infrastructure
- UVA-led Design Camp for resident youth in progress to plan “reuse” of Ash tree
- Project is budgeted

Pollocks Branch Pedestrian Bridge

Parks and Recreation Trails Plan

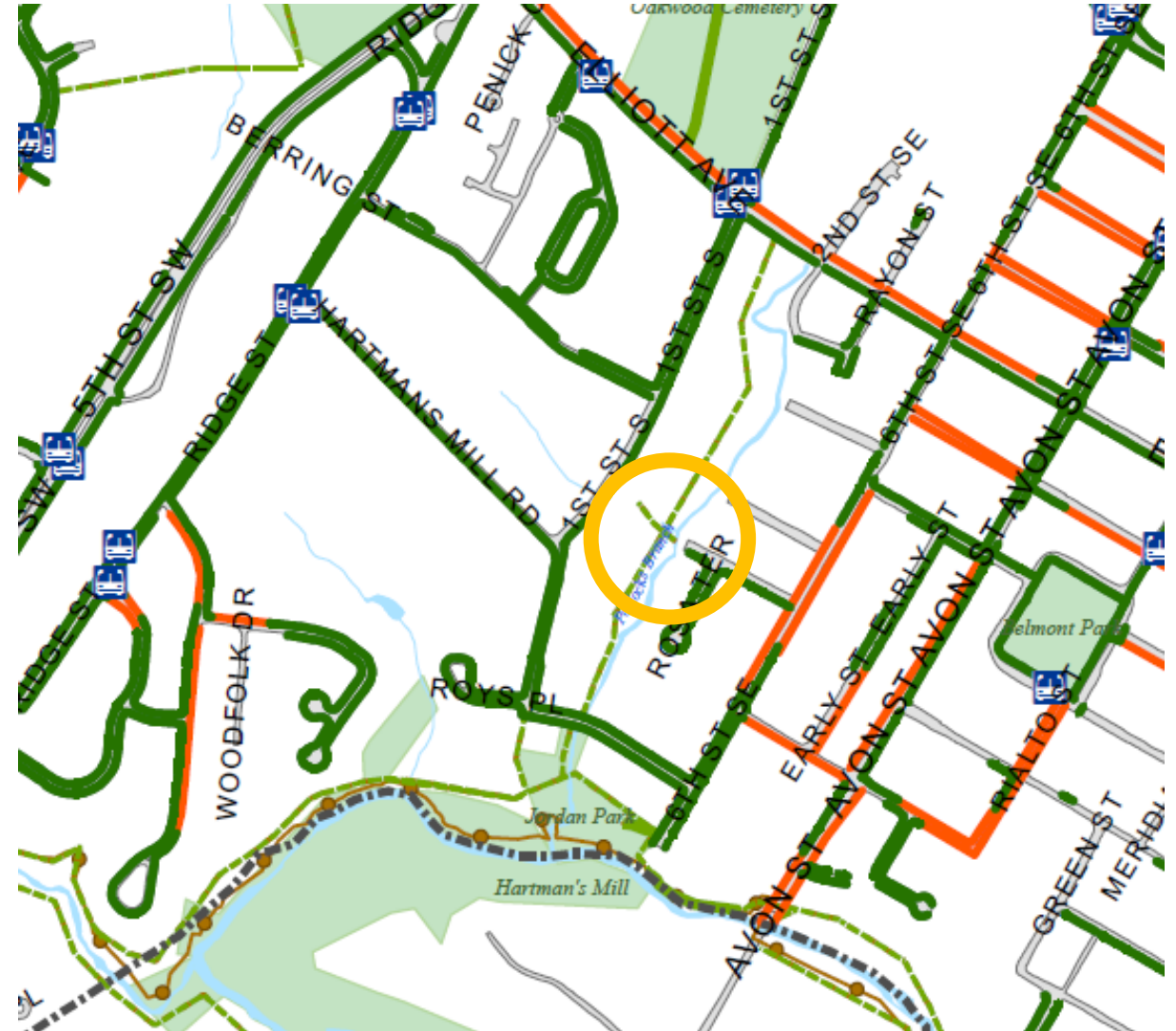
- The Pollocks Branch proposed trail connection between Elliott Avenue and Jordan Park has been developing slowly over time. It will eventually link the Rivanna Trail loop and City trails along Moores Creek to downtown. It is currently a single track type trail, with proposals to upgrade it to shared use (paved or stone dust) as part of large site redevelopment.
- The trail has provided access into the woods for local use as well as a growing number of stream cleanups



Pollocks Branch Pedestrian Bridge

Parks and Recreation Trails Plan

- The bridge will connect the Pollocks Trail system to 6th street as well as residents to each other and retail stores nearby.
- There are some proposals that could transfer the stream valley over to Parks and Recreation after site redevelopment is complete for longer term forest and creek restoration activities.



Pollocks Branch Pedestrian Bridge

Opportunities

On-Street Routes

- Primary Routes
- Missing Sidewalks

Safe Crossings

- Improved Intersections with Potential Stormwater Treatment (see SIA Plan)

Greenway System

- Existing Trails
- Potential Greenway Extension
- Potential Access Points
- Potential Creek Crossings

Green Infrastructure Projects

- Potential Capstone Projects
- Potential Planted Buffers
- Potential WaterWise Murals

Specific Recommendations

(described in more detail on pages 4-7)

- 1 Monticello Avenue Connector
- 2 Elliott Avenue Improvements
- 3 6th Street & Jordan Park
- 4 Pollocks Branch Greenway



Pollocks Branch
Walkable Watershed
healthy waters : healthy communities

Walkable Watershed

Purpose: To build on existing efforts to develop a Walkable Watershed concept plan and list of potential green infrastructure projects to improve water flow and pedestrian amenities in the lower Pollocks Branch Watershed.

Components of this include:

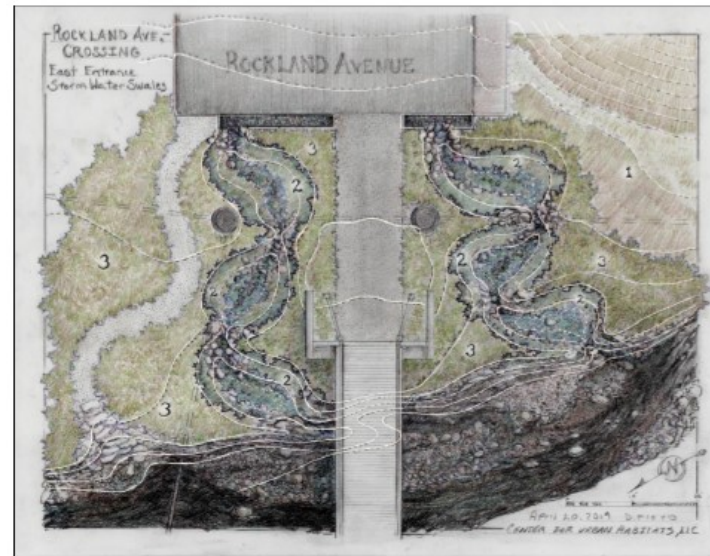
- Community Assets & Destinations
- People Flow
- Water Flows

www.walkablewatershed.com

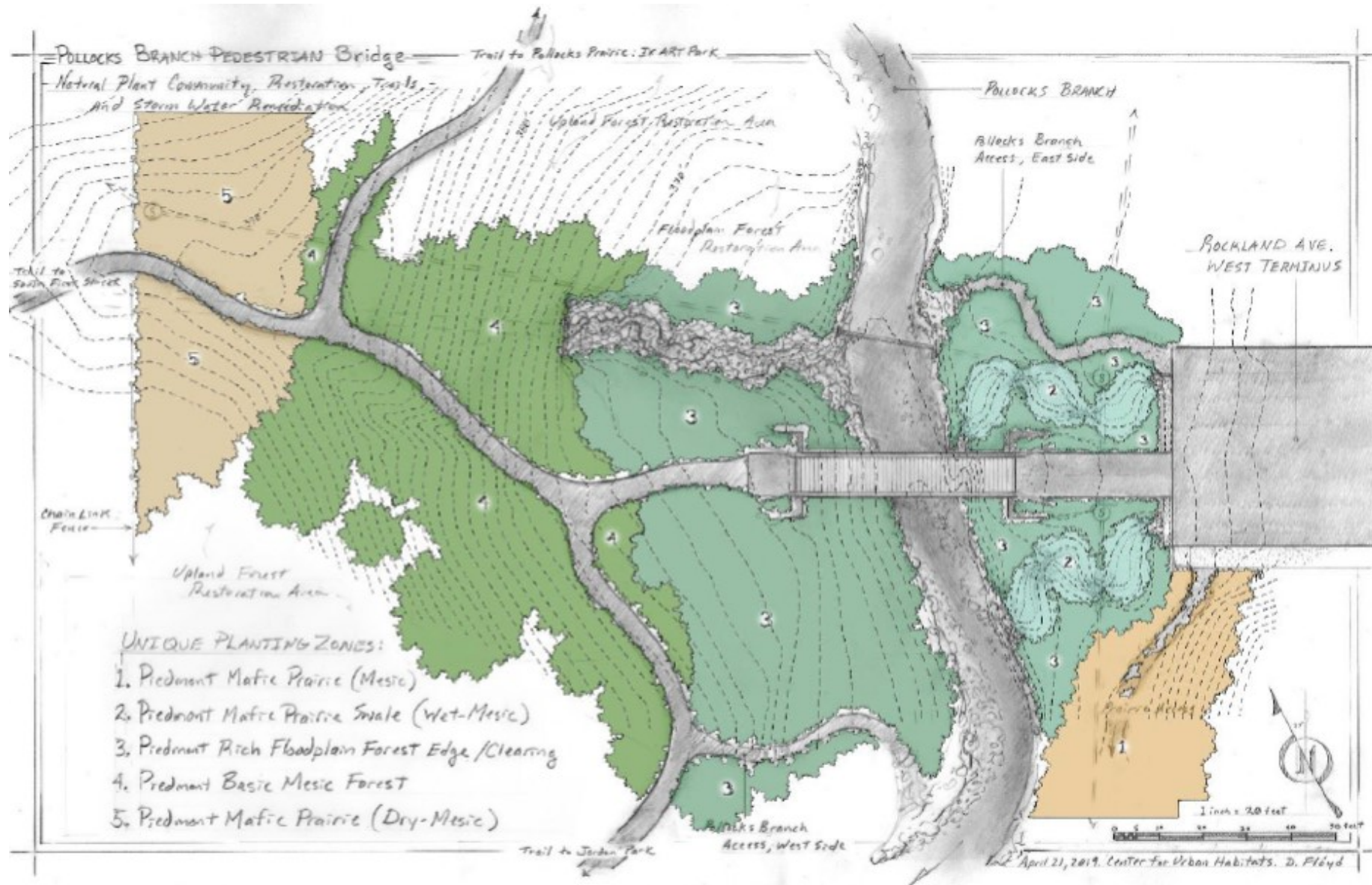
Pollocks Branch Pedestrian Bridge

Public Works – Environmental Sustainability Division (Water Resources)

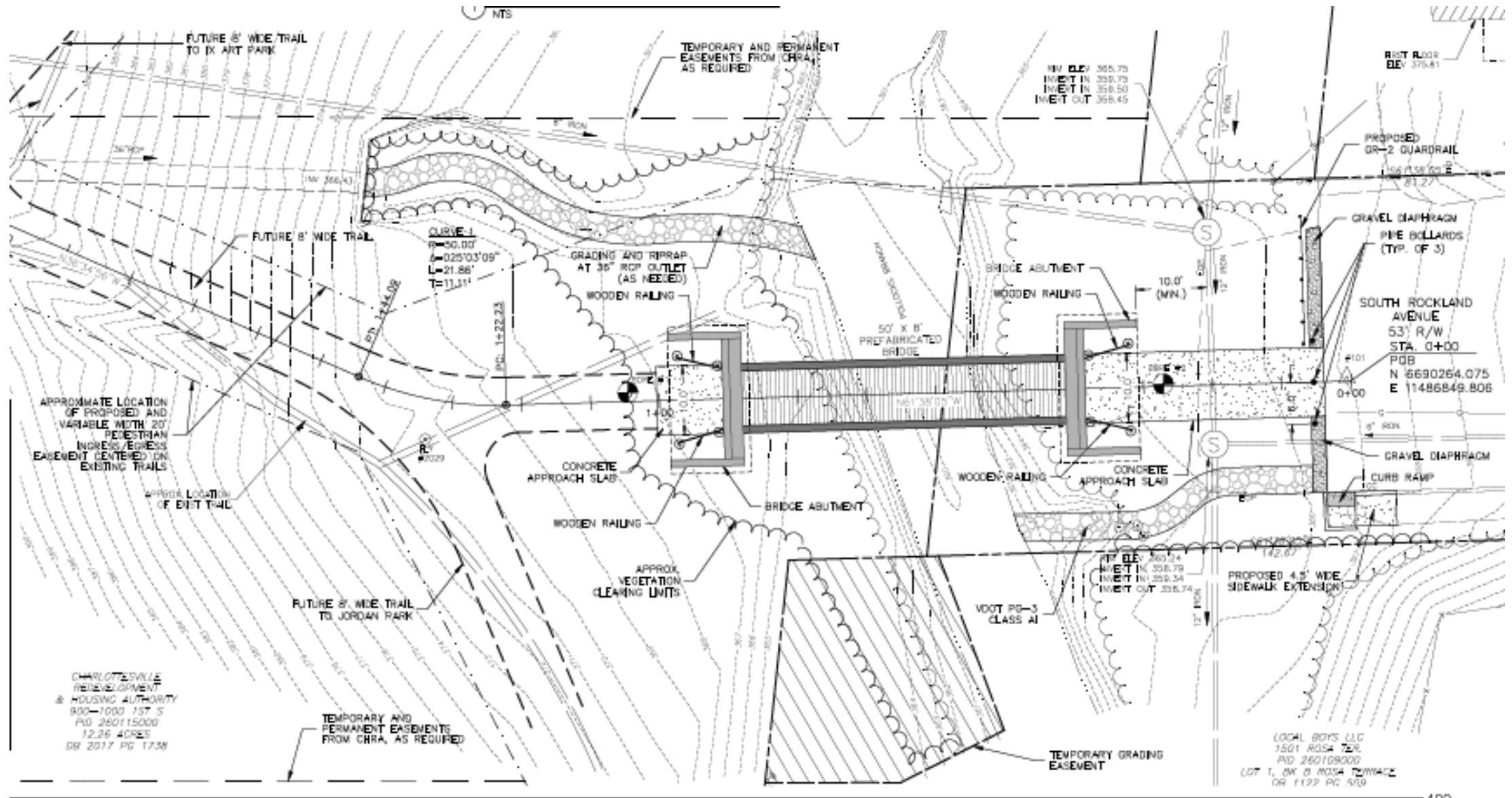
- Native landscape restoration proposal/plan developed by Center for Urban Habitats
- Proposed temporary seed mix for stabilization of disturbed area resulting from bridge installation, developed by Center for Urban Habitats that will work in concert with the proposal/plan above



Pollocks Branch Pedestrian Bridge



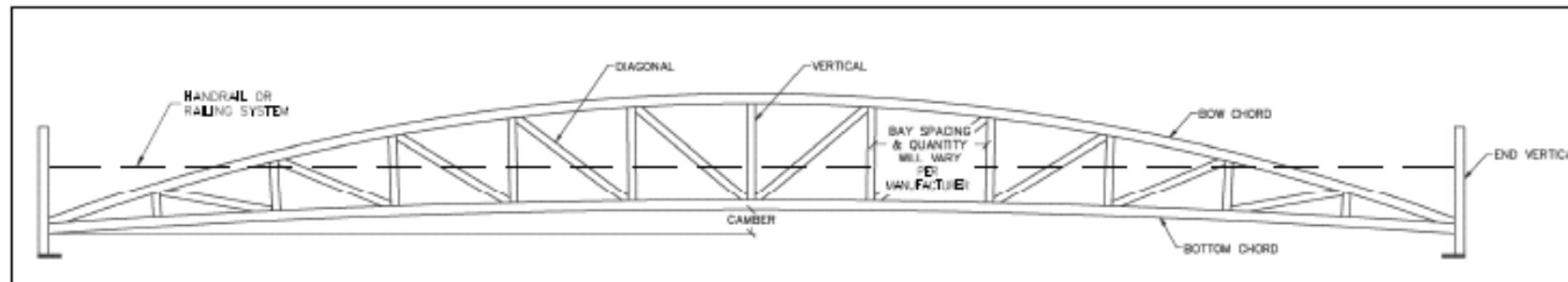
Pollocks Branch Pedestrian Bridge



Pollocks Branch Pedestrian Bridge

Proposed Bridge Design

- 50' x 8' prefabricated bridge
- Wood deck
- Bowstring top chord style steel truss
- Color: black



1 PEDESTRIAN BRIDGE TYPICAL SECTION
NTS

Pollocks Branch Pedestrian Bridge

Next Steps:

- Finalize construction documents
- Contract with Center for Urban Habitats for native habitat landscape plan
- Issue/award bid for construction/installation of bridge and landscaping
- Before construction - remove existing native plants from construction zone and replant in safe holding area
- Continue to coordinate with UVA and CRHA on design and construction of “furniture” and “play equipment” (created from removed Ash tree)
- Coordinate construction/installation with development of CRHA vacant land