



Presentation to Charlottesville City Council
September 15, 2025

Jon Nafziger—Executive Director



**Child Health
Partnership** provides
at-home support to
children and parents to
promote the health and
well-being of families
facing challenges in our
community.

We build on families'
strengths.

childhealth
PARTNERSHIP



**The first 2,000 days of
a child's life are the
most important and
the best time to invest
in long-term health
and future success in
school and in life.**

Child Health Partnership

Provides dedicated teams of registered nurses and certified family support specialists who build trusted relationships with families in their home to:

Promote child and family health.

Enhance parenting skills and child development.

Foster family self-sufficiency.

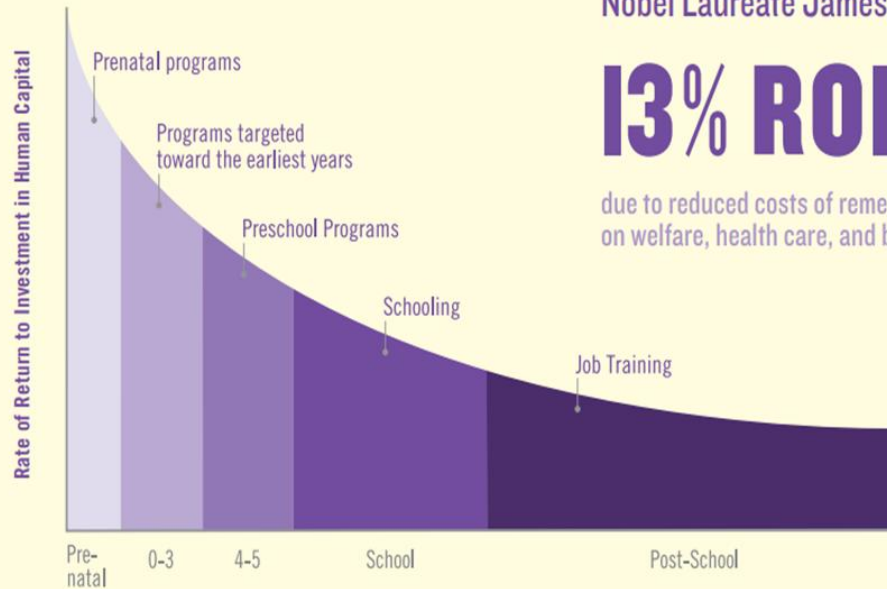
We average one to two home visits per month.

Families average 20 months in the program.

2025 is our 35th Anniversary!

EARLY CHILDHOOD DEVELOPMENT IS A SMART INVESTMENT

The earlier the investment, the greater the return



Nobel Laureate James Heckman estimates a

13% ROI



**FROM INVESTING IN
HIGH QUALITY EARLY
CHILDHOOD PROGRAMS**

due to reduced costs of remediation, incarceration, reliance on welfare, health care, and better employment outcomes

Source: James Heckman, Nobel Laureate in Economics

Building Healthy Communities

The single most common factor for children who develop resilience is at least one stable and committed relationship with a supportive parent or caregiver.





Two Generations at a Time

Nurse home visits offer:

- Prenatal support
- Depression screening
- Health screening and assessment
- Health education
- Improved access to medical and dental care

Family support visits provide:

- Parenting skills and knowledge
- Developmental screenings
- Employment and education support
- Improved access to services
- Transportation
- Connections to community resources



Services are FREE and VOLUNTARY.

**Last year, we supported the health and
well-being of 367 children
in 225 families in Charlottesville,
Albemarle, Fluvanna, and Louisa.**

**FY25 total = 118 Charlottesville children
and 174 Charlottesville participants**

Since 1991, we have served over 5,700 children from 3,600 families.



Partnership works.

After one year in the program...

97% of children have a medical home for sick and prenatal care.

97% of children were up to date on their immunizations.

93% of children were current on developmental screenings.

90% of children had current health assessments.

84% of children were up-to-date on well-child visits.

76% of families had at least one parent employed.

60% decrease in families that moved twice or more in the previous year (from 30% down to 12%).

80% decrease in children who needed medical care but did not receive it (15% to 3%)

67% decrease in children who needed dental care but did not receive it (26% to 9%)

Average visits annually per family = 16

2025 UPDATE

Successes

- Staff continuity
- Strong outcomes
- Increased referrals and enrollments
- Increased private fundraising

Challenges

- Flat state funding since 2017 (-32%)
- Ongoing pandemic impacts?
- Family stress, engagement and trust

Federal impacts

- Immigration policies and enforcement
- Budget -- \$63K federal grant currently OK (3% of budget); all state dollars are General Fund





childhealth

PARTNERSHIP

At home family support

Contact: Jon Nafziger, Executive Director

Jon.Nafziger@childhealthpartnership.org

www.childhealthpartnership.org

(434) 964-4701