



AARP Network of Age-Friendly States and Communities

An age-friendly community is livable for people of *all* ages

America's Population Is Rapidly Aging

According to the U.S. Census Bureau, by 2034 the nation will have more people age 65 or older than under 18. By 2060, nearly 1 in 4 people in the United States will be at least 65 years old.

This demographic shift presents an opportunity for communities that are prepared. Well-designed, age-friendly communities foster economic growth and make for happier, healthier residents of all ages.

The **AARP Network of Age-Friendly States and Communities** supports the work of local, regional and state governments as they prepare for the nation's changing demographics. Established in 2012, the network includes towns, cities, counties and states that have made a commitment to being more livable for people of all ages, and especially older adults.

The program's framework equips local leaders and residents with resources for assessing the needs of older adults related to housing and transportation options, access to key services, and opportunities to participate in community activities. Once identified, those needs can be incorporated into an action plan.



Age-Friendly Communities
Are Livable for
People of All Ages
aarp.org/livable

Membership in the network:

- Serves as an organizing structure for making community improvements
- Fosters partnerships among community groups and local stakeholders
- Provides resources for identifying and assessing community needs
- Enables community improvements that benefit people of all ages

Membership provides local leaders with:

- Access to expert-led webinars and technical assistance from livability professionals
- Connections to a national network of more than 700 enrolled communities
- A private group forum for discussions, asking questions and finding answers
- Support, guidance and best-practice resources from AARP about creating an action plan and documenting progress

Membership in the AARP Network of Age-Friendly States and Communities is *free*!

Membership matters:

- 68% of communities successfully advanced policy changes
- 86% of communities overcame barriers
- More than 100 million people in the United States live in a community that is committed to being age-friendly.

DEMOGRAPHIC DATA: "Demographic Turning Points for the United States: Population Projections for 2020 to 2060," *Current Population Reports*, P25-1144, U.S. Census Bureau, Washington, D.C., 2020

AARP NETWORK OF AGE-FRIENDLY STATES AND COMMUNITIES DATA: 2022 Member List and Survey

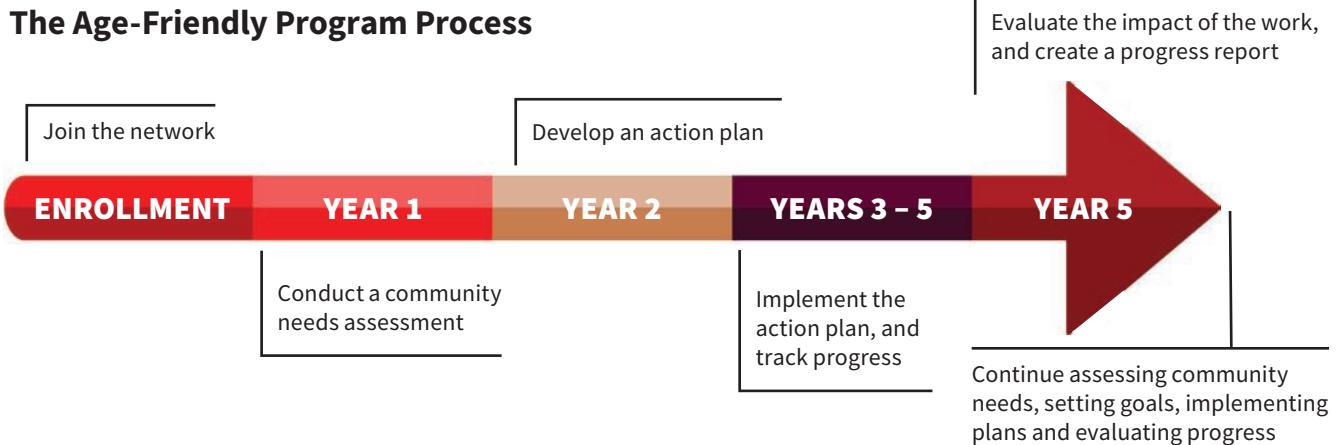


Enrolling in the Network

Communities enroll individually or as part of a region. A governor can choose to enroll an entire state. All towns, villages, townships, boroughs, cities, counties and states seeking to enroll in the AARP Network of Age-Friendly States and Communities are required to submit a membership application. The community must also provide a letter of commitment signed by the jurisdiction's highest elected official (e.g., a governor, mayor, county executive) or a legislative body can pass and provide a resolution in support of membership.

Learn more and find the membership application via [AARP.org/AgeFriendly](https://www.aarp.org/AgeFriendly).

The Age-Friendly Program Process

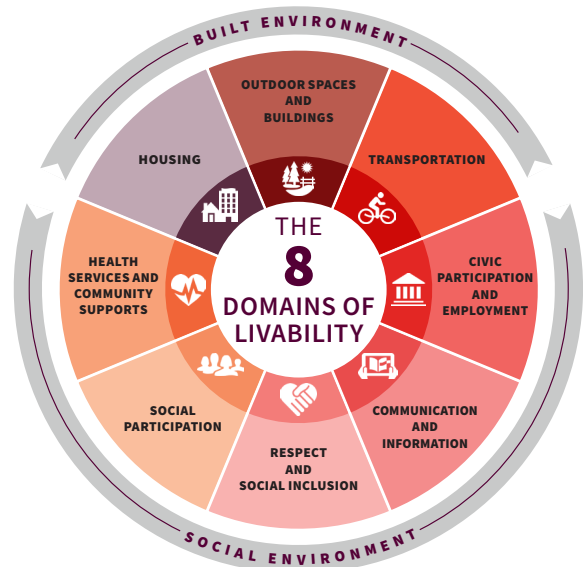


The Program Steps

Members of the **AARP Network of Age-Friendly States and Communities** commit to an assessment process and cycle of continuous improvement, the steps of which typically require the member community to:

1. Establish a way to include older residents in all stages of the age-friendly process
2. Conduct a community needs assessment (*AARP provides survey examples and access to an online tool*)
3. Develop an action and evaluation plan based on the assessment results and submit to AARP for review
4. Implement the plan and work toward its goals
5. Assess the impact of implementing the plan and submit progress reports
6. Share solutions, successes and best practices across the age-friendly network
7. Repeat!

The **8 Domains of Livability** is the framework used by states and communities enrolled in the network to organize and prioritize their work. The availability and quality of these community features impact the well-being of older adults and people of all ages.



LEARN MORE, GET IN TOUCH

- **Website:** [AARP.org/AgeFriendly](https://www.aarp.org/AgeFriendly) or [AARP.org/Livable](https://www.aarp.org/Livable)
- **Twitter:** @AARPLivable
- **Email:** AARPAge-FriendlyNetwork@AARP.org
- **Free Newsletter:** [AARP.org/LivableSubscribe](https://www.aarp.org/LivableSubscribe)
- **Facebook:** /AARPLivableCommunities
- **Locate Your AARP State Office:** [AARP.org/States](https://www.aarp.org/States) or call 1-888-687-2277

OR SCAN THIS CODE



D19860